

Who is Who?

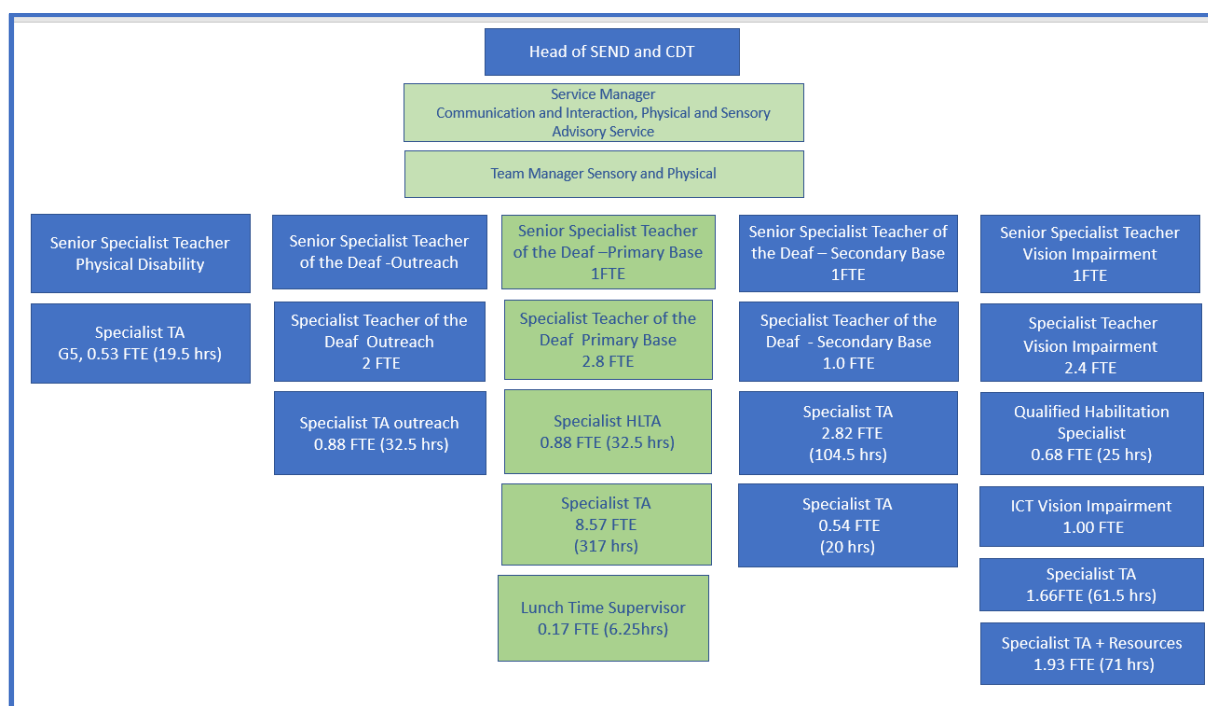
Ashwood Park Resource Base for the Deaf



The Ashwood Park Resource Base for Deaf Children (RBD) is a non-commissioned specialist educational resource provision that is centrally funded and managed by DMBC, Communication and Interaction, Physical and Sensory Advisory Service (Hearing Impairment Service). It is responsible for:

- (i) identifying the number of places required
- (ii) placement of D/deaf pupils
- (iii) provision and delivery of the AP RBD
- (iv) employment of AP RBD staff
- (v) staff and resource costs of the AP RBD

This is the staffing structure of the Communication and Interaction, Physical and Sensory Service. The positions responsible for running the RBD are highlighted green:



The Hearing Impairment Service, through the Team Manager of Sensory and Physical as well as the Senior Specialist Teacher of the Deaf for the Primary Base, work in collaboration with the Head Teacher, Senior Leadership Team and staff at Ashwood Park Primary School to ensure that all D/deaf pupil are included within the whole school community and have equal opportunity to access all parts of school life. The collaboration ensures that the holistic needs

of the D/deaf pupils are met within a mainstream environment and that the achievements and aspirations of the pupils within the RBD at Ashwood Park are positively promoted.

This is the staffing structure that shows the people responsible for the daily running of the RBD at Ashwood Park:

