



NEWSLETTER



13th Sept 2024
Newsletter No. 02
Tel: 01384 818545 email: info@ashwood.dudley.sch.uk

Article 28
Every child has the
right to an education

Messages from Mr Butler

We have had a lovely start to the new School Year but unfortunately we have received a complaint about parking near School. Please do **NOT** park on the grass verges at the top of the drive, these are not parking spaces and are a safety concern at the busy start and end of the School Day.

As the weather is turning wet and chilly please can you send your child to School with their waterproof coat as they may need it at Break and Lunch times. On PE days children may wear a **plain** black tracksuit/joggers and sweatshirt over their PE Kit.

If you send your child to School with a packed lunch please do **not** include canned or glass bottled drinks.

We have arranged a Rags2Riches4Schools Collection on Tuesday 22nd October to raise vital funds for School. See Page 5 for more details.

Once again we are supporting the Black Country Food Bank Harvest Appeal and would be grateful if your kind donations could be in School by Friday 18th October. See Page 6 for more details.

We have been allocated a new Attendance Officer from the Local Authority. She will be coming into school to ensure the attendance at Ashwood Park is the best it can be. She will be checking on children who fall behind with their attendance, ensure that our policy is adhered to and she will be checking if fines have been issued for non-attendance.

The School Governors have formed a "Strategic Committee" who will be coming into School more regularly to monitor progress against our recent Ofsted judgement. We will keep you informed of findings as we go along, the first meeting will be on 25th September.

K Butler

ASDA Cashpot for School

In a new campaign, fronted by Joe Wicks, ASDA is offering to donate 0.5% of the value of any shop done at Asda until 30th November 2024 to customers' Primary School of choice - when they shop using Asda Rewards. Just select Ashwood Park on the ASDA Rewards App and scan the app when you shop.

[Register for an Asda Rewards account - Asda Rewards](#)

Attendance

Last week's (03.09-06.06) top attenders were:

Key Stage 1: 1/2D Moles 100%
Key Stage 2: 4D Chestnut 100%

As a School we have a responsibility to monitor the attendance of all children in School. Attendance is vital to a child, children who have better attendance are proven to achieve more.

New National guidance was released for all schools on 19th August. Follow this link for the full details:

[Fines for parents for taking children out of school: What you need to know - The Education Hub \(blog.gov.uk\)](#)

Praise Awards

W/C 09.09.24

Key Stage One

RR Foxes N/A
RT Hedgehogs N/A
1/2B Squirrels Jesse M
1/2D Moles Bobby D
2W Badgers Ethan S

Key Stage Two

3/4H Elder Elia-Jade I
3/4R Oak Alfie J
4D Chestnut Emilia E
5P Beech Genie-Jo S
5/6B Holly Isabelle M
6RB Rowan Cory C

Dates for the Diary

Friday 18th October

Harvest Donation Deadline

Monday 21st October

'Flu Vaccinations

Tuesday 22nd October

Rags2Riches Deadline

Friday 25th October

Break up for half term 3.15 pm

Monday 4th November

Return to School

Monday 11th November

School Photos

Friday 20th December

Break up for Christmas holiday 3.15pm

Menu*
WC **16.09.24** (Week 3)



Monday

Pizza Naan
Quorn Dippers (V)
Jacket Potato with Choice of Filling
Potato Crunchies
Wafflemeister Waffle

Tuesday

Fish Stars
Mac 'n' Cheese (V)
Jacket Potato with Choice of Filling
Garlic Bread or Potato Wedges
Hot Chocolate Sponge & Custard

Wednesday

Roast Beef
Halal Roast Chicken
Quorn Balls (V)
Gravy
Jacket Potato with Choice of Filling
Mashed Potatoes
Cornflake Cake

Thursday

Chicken in a Bun
Cheese & Onion Roll (V)
Jacket Potato with Choice of Filling
Diced Potatoes
Shortbread Selection

Friday

Pizza Selection
Veggie Burrito (V)
Jacket Potato with Choice of Filling
Chips
Fruity Friday Desserts

Available Every Day

Sandwich, cheese, tuna or ham filling.
Jacket Potato with a choice of cheese, beans or cheese and beans.
Salad, crusty bread, fresh fruit, yoghurt

All dinners must be booked through School Money the day before they are needed. Please contact the school office if you are having any issues.

* Subject to change

Lunches from Home

If you are sending your child with a packed lunch, can we ask that you cut grapes, cherry tomatoes and similar in half please. Also, as a **nut free** school please do not send in Nutella sandwiches or any other nut products. Please do NOT send drinks in cans or glass bottles.

EYFS News

A very warm welcome to all our new nursery starters! Reception children have completed their first full week and have done brilliantly! Next week we will begin our phonics scheme. Many parents were unable to attend our meeting about it this week, so please look out for the emails each week. We will send parent information sheets about how we teach the children to read and write and what letter sounds will be learned. We would really appreciate your help, so please practise the letter sounds at home as much as possible. Finally many parents have asked about PE in reception. We will begin PE in the future weeks and will give you plenty of notice using the usual communication methods.



Tree Tots Toddler Group

Wednesdays 9.00 - 11.00am KS1 Hall



First session 25th September

Toys, activities, songs, stories and crafts available. Refreshments included – adults please bring a lidded cup!

KS1 News

This week in Key Stage One we have been creating some great character descriptions about Cyril the Squirrel from our class story.



We have also started our Geography topic - What is it like here? Which is all about where we live. We have

used Google earth to look at the country, town and street we live in. The children used aerial maps to find Ashwood Park!

Next week we will be continuing with our story 'The squirrel who squabbled' and we are going to be writing our own version and thinking of our own brand new characters!



RBD News

As we come to the end of our second week, we are so proud of how all the children have settled back into school life. We are very impressed with how determined they are to achieve and we are looking forward to another successful year in the RBD.

Just a few reminders:

- Please can you make sure you book your child's lunches or provide a packed lunch.
- Please make sure your child comes into school with a coat every day as the weather is being very unpredictable at the moment.
- Reading is an extremely important way to support your child with their learning at home. Please try to read with your child at least 3 times a week if possible and write a comment in their reading journal.

Over the next week or so the children will be bringing home their risk assessments and personal evacuation plans. Please check your child's bag for these. It is very important that you read these through carefully, sign them and send them back to school. Thank you.

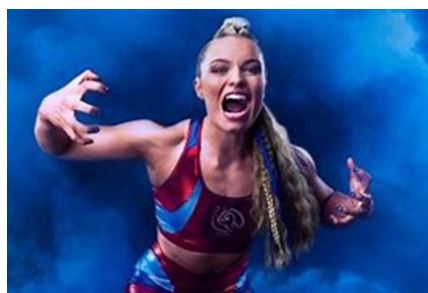


Well done!

Well done to Ruzena for an excellent start to Year 3 and really trying hard to build on her previous learning.

This week's signed video is about Jodie Ounsley, also known as the Gladiator, Fury. What an inspiration she is to deaf and hard of hearing children. Please follow the link to find out about her determination to succeed!

<https://www.youtube.com/watch?v=bXA5kZwJyTc>



KS2 News

All of our classes have started their new topics now. Please take a look at our website over the next few weeks as we will be uploading all of our Knowledge Organisers for the term.

In English this week our year 5 and 6 children have been using a short clip from the Avatar film to begin to describe the planet Pandora. The children have really enjoyed exploring this imaginary setting.



Our year 3 and 4 children have started their English work using the book, How to Be a Viking. This uses some of the characters from the popular series, How to Train Your Dragon, which has been very popular with our children in the past and could be a good choice of book to read at home with your child.



YEAR 3 and 4

In year 4, children are required by the government to sit a Multiplication Tables Check (MTC).

YEAR 3 and 4

We will arrange to present further information to you about this closer to the time, however, please read last year's parent information document if you would like to find out more.

<https://www.gov.uk/government/publications/multiplication-tables-check-information-for-parents>

<https://play.trockstars.com/>

In the meantime, can you please ensure that your child keeps up with their times tables homework and regular times tables practise at home. Please can you support your child to log on and complete their practise using TT Rock Stars. All children should have their login details.

<https://play.trockstars.com/>

PE Lessons:

- Years 3 and 4 - Friday
- Years 5 and 6 - Monday (6RB bringing their swimming kit)
- Years 3 and 4 can come to School in their PE kit on **THURSDAY only**
- Years 5 and 6 can come to school in their PE kit on **WEDNESDAY only**

TT Rockstars

This weeks Rockstars* are;

1st Bella P
2nd Felicity H
3rd Amber W

Well done to everyone!

Urgent Plea

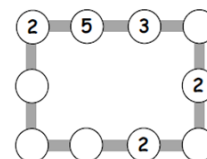
The Kids Clothes Project has been running for 4 years and has so far helped over 1500 children in families in need across the Black Country, including some from Ashwood Park. They are in **desperate** need of jumpers; T-shirts, trousers, new underwear, shoes, coats, pyjamas, dresses, swimwear, books and soft toys if you have any items spare.

There is a donation bin for The Kids Clothes project in our School Reception so please donate what you can. Many thanks.

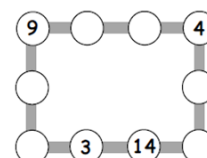


Number lines

1. Make each line add up to 16.



2. Make each line add up to 20.



3. Make up your own puzzle like this. Ask a friend to do it.



Children's Speech and Language Service (Dudley)

Advice for parents and carers can be found at:

<https://www.blackcountryhealthcare.nhs.uk/our-services/childrens-speech-and-language-therapy-service-dudley>

Dudley's Special Educational Needs and Disabilities Bulletin

The Dudley Special Educational Needs and Disabilities e- bulletin's aim is to keep parent carers, education settings and stakeholders informed about Dudley's Special Educational Needs and Disabilities (SEND) Improvement Programme as well as news and events.

As a system we are working hard to improve our SEND offer across the borough. A lot is happening and we are gathering pace to better support our children, young people and families with SEND.

Our latest bulletin provides:

- updates of our improvement journey including our progress of our Delivering Better Value Programme in SEND
- SEND news from the Dudley Parent Carer Forum, Health, the council and partners
- details of useful events for parent carers and practitioners
- SEND Education Settings News which includes information about free SEND training Resources.

Sign up now (<https://tinyurl.com/DudleySENBulletins>) to receive this e-bulletin direct to your email inbox

Health Choices

Dudley Public Health and Wellbeing is part of Dudley Council. We support and enable residents, families and communities to make positive lifestyle changes and improve your health and wellbeing.

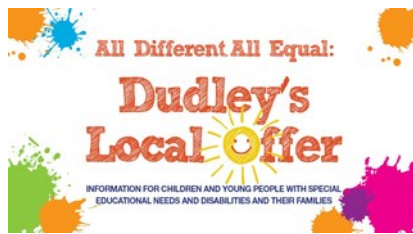
There is lots we can do as individuals to stay healthy and well in Dudley borough. This website is a one-stop place for up-to-date public health information and news, from pregnancy and early life to healthy ageing.

<https://healthydudley.co.uk/>

Healthy Lunchboxes

The Healthy Lunchbox Resource is available to support children & families to make healthy, yummy and tooth friendly food choices for their children's lunchbox.

<https://healthydudley.co.uk/lunch/>



Dudley's Local Offer is a new one stop shop website for children and young people with special educational needs and disabilities (SEND) and their parents and carers.

Dudley's Local Offer is part of the Dudley Community Information Directory – an online directory which offers people quick and easy access to information on local services.

The Local Offer webpages contain a wealth of up to date information on areas which include education, training and work, health, leisure and fun, care and moving into adulthood.

The website aims to help young people and parents to make individual, informed, positive decisions and choices

<https://dudleyci.co.uk/send-local-offer>

The Dudley family hub network is a one-stop shop, offering advice and support for families in



Dudley with children aged 0-19 (25 if the child has special educational needs and/or disabilities). It includes an online offer and five local family hubs.

The network includes key Start for Life services. These cover the period from conception to age two. Core Start for Life services such as midwifery, health visiting and early years support are included.

<https://www.dudley.gov.uk/residents/early-years-and-childcare/dudley-family-hub-network/>

Important Message

Please also ensure that your child has the appropriate footwear for School and PE - flat black shoes for School and pumps or black trainers for PE.

Crocs, open back shoes, open toe sandals and high heels are **not** appropriate footwear for School and/or sporting activities.

2024-2025 INSET Days

- Monday 2nd September 2024
- Monday 6th January 2025
- Thursday 1st May 2025 (VOTING)
- Friday 2nd May 2025
- Wednesday 2nd July 2025
- Monday 21st July 2025

Parent Carer Forum Update:



Dudley Parent carer Forum welcome registrations for membership from parent/carers and also offer associate memberships to wider family members or practitioners working within Dudley. Joining up means you will be kept up to date on all the latest news, information and events doing on in Dudley. Parents/ Carers will also receive a FREE gift when they sign up!

[Sign Up Here](#)

Integrated Early Years Service Parent Support Group



This group offers support to parents and carers of children with a range of additional needs. It provides supportive environment to engage with your child, and also to gain practical advice for everyday routines.

Dudley Parent Carer Annual Survey SEND Services 2024

This survey is for parent carers of children/ young people with special educational needs or disabilities (SEND) between the ages of 0-25 and living in Dudley.

We want to hear about your recent experiences with a range of different services. To keep this information up to date and relevant we will sometimes ask you to think about your experiences within a certain timeframe (eg previous 12 months).

We understand that if you have more than one child your experiences may vary for each child. Therefore we ask that you **complete a separate survey for each child with SEND that you have.**

We will use the information provided to ensure we focus our work on the areas that are most important to you. We will share the results of this survey with our members and wider networks as well as local services. We will also share the results of this survey with Ofsted or the Department for Education (DfE) during any inspections of SEND services. We will never share any identifying information.

<https://www.surveymonkey.com/r/QFYQL2J>

Happier Minds

Whether you are a young person, a parent/ carer or a professional working with young people we hope this site will be helpful to you and those you care about.

<https://happierminds.org.uk/>



Starting secondary school in September 2025

Why not apply for a place online?

If your child is due to start secondary school in 2025 then you will have to apply for a school place before 31 October 2024.

You **MUST** complete an application form either online at www.dudley.gov.uk/admissions or by completing the application form provided by your home local authority. You can include six school preferences on the application form; there is nothing to gain by only putting one preference.

Benefits of applying online

- E-mail decision received by 2pm on day of offer
- It's quick and easy to use
- You can apply 24 hours a day, 7 days a week
- There's no risk that your application will be lost in the post
- You will get email confirmation that your application has been received
- It's safe and secure

The online system will be available 24 hours a day, 7 days a week from 1 September 2024 until the closing date for applications on **31 October 2024**.

You should not assume that your child will get a place at a secondary school without you having to apply, even if you have an older child already attending the same school. This is a common misconception and often the biggest cause of disappointment for parents who believe otherwise.

For further information please contact Dudley School Admissions Service on **0300 555 2345**.



one click ... makes it quick
www.dudley.gov.uk/admissions





We have arranged another collection with the Rags2Riches4Schools recycling scheme, to raise money and help others around the world benefit from our good quality unwanted clothes and shoes. We get 40p for every kilo we collect of reusable items which we can use towards School resources and would be most grateful if you could help us with this challenge.

We have a collection booked on Wednesday 23 October so please keep good clothing to donate to us by:

Tuesday 22 October

Clean and reusable items that can be donated:

Good quality clothes and accessories.

Adults, children's and babies clothing such as jackets, jumpers, hoodies, trousers, skirts, scarves, gloves, belts, handbags, paired shoes and other footwear etc.

Items that cannot be reused:

Worn out shoes or clothes, clothes that are wet or have holes in.
Curtains, pillows or duvets, bric-a-brac or books. Personalised items.
Work uniform, School uniform or school sports kit

If you are unsure what to put in the bags, then

STOP AND THINK - WOULD SOMEONE ELSE BUY & WEAR IT?

If it isn't something you'd wear out and about yourself or pass to a friend, then no-one else will want to buy and wear it so unfortunately, it's not reusable and can't go in the bag.

Donated clothes and accessories are sent to Europe, Africa and even further away to be sold at market stalls as affordable items for those in real need of clothing.



SHOPPING LIST

BLACK COUNTRY FOODBANK HELPS VULNERABLE INDIVIDUALS AND FAMILIES IN CRISIS THROUGH THE PROVISION OF AN EMERGENCY FOOD AND TOILETRY PARCEL, WHILE A LONGER-TERM SOLUTION IS DEVELOPED

PLEASE SUPPORT US BY DONATING ITEMS FROM OUR SHOPPING LIST

- **CARTONS OF LONG LIFE FRUIT JUICE**
- **CARTONS OF UHT MILK**
- **CORDIAL/SQUASH**
- **SMALL JARS OF COFFEE**
- **TEA BAGS BOX OF 40'S**
- **TINNED CHOPPED TOMATOES**
- **TINNED POTATOES/MASH**
- **TINNED FRUIT**
- **TINNED CUSTARD/RICE PUDDING**
- **TINNED READY MEALS (MEATBALLS/CHILLI/MAC AND CHEESE)**
- **TINNED MEAT (HAM/CORNERED BEEF)**
- **TINNED FRAY BENTOS PIES**
- **TINNED FISH**
- **TINNED VEGETABLES**
- **BREAKFAST CEREAL**
- **PASTA SAUCE**
- **SAVOURY RICE**
- **INSTANT NOODLES**
- **ROLL ON DEODORANT**
- **SHAMPOO**
- **SHOWER GEL**
- **TOILET ROLL**
- **BARS OF SOAP**



PLEASE SCAN THE QR CODE TO RECEIVE A WEEKLY REMINDER OF OUR SHORTAGES LIST ON YOUR SHOPPING DAY

**BLACK COUNTRY
FOODBANK**
LOVE . CONNECT . INVEST



LOVE . CONNECT . INVEST

T: 01884 671280
E: admin@blackcountryfoodbank.org.uk
W: blackcountryfoodbank.org.uk
Registered Charity No. 1196876

Free School Meals

If you receive any of the following support payments your child may be entitled to Free School Meals

- Income Support
- Income-based Jobseekers Allowance
- Income-related Employment and Support Allowance
- Support under Part VI of the Immigration and Asylum Act 1999
- The guaranteed element of State Pension Credit
- Child Tax Credit (provided you're not also entitled to Working Tax Credit and have an annual gross income of no more than £16,190)
- Working Tax Credit Run-on – paid for 4 weeks after you stop qualifying for Working Tax Credit
- Universal Credit

If you currently receive free school meals but have now moved into the area, you will need to complete a new Free School Meals Application form

If you wish to apply for Free School Meals, please go to

www.dudley.gov.uk/resident/your-council/council-tax-and-benefits/benefits/free-school-meals

If you need further information, you can contact the Free School Meals Team by:



Telephone -01384 814988



Email – freeschoolmeals.benefits@dudley.gov.uk



Visiting – Dudley Council Plus, Castle Street, Dudley
between 8.30am and 5pm Monday to Friday, 9am and 12 noon Saturday



YOGABRIDGES
PRESENTS

BRITISH WHEEL OF YOGA CERTIFIED

SUITABLE FOR ALL LEVELS OF ABILITY



EVERY THURSDAY | START AT 7.30PM

Ashwood Park Primary School, Bells Lane, Wordsley, Stourbridge, DY8 5DJ

£9 / CLASS OR 10% DISCOUNT FOR FULL TERM

FOR BOOKINGS AND ENQUIRIES PLEASE CALL OR EMAIL JAN:

07764 404975 | janetcooper@blueyonder.co.uk | www.facebook.com/yogawithjan