



## Messages from Mr Butler

Welcome back after a well earned half term break. Congratulations to our Boccia team who won the Dudley Schools tournament before the break, we are very proud of you!

Next week is a very busy week:

We have **School photographs** on Monday (11<sup>th</sup> November). If you would like a family shot and have siblings that do not attend Ashwood please arrive between 8 and 8.30 am.



In support of Anti Bullying Week we are having an **Odd Socks Day** on Tuesday (12<sup>th</sup> November), please send your child in the oddest non-matching socks possible.



We look forward to seeing you on Tuesday and Wednesday (12<sup>th</sup> and 13<sup>th</sup> November) at our **Teacher/Parent Consultations**, appointment slips will come home with your child on Monday.

The **Scholastic Book Fair** will be open in the KS2 Hall both days, please support your child's love of reading and help earn free books for School.



On Friday (15<sup>th</sup> November) we will raising funds for **Children in Need** by having a Mufti day. Children can wear their own clothes in exchange for a donation to support this amazing charity.



**Reminder**—Please don't allow your child to ride bikes, balance bikes and scooters on the School site. We have had a near collision recently would hate to see anyone injured.

**Reflexions**—Matt from Reflexions will be attending our Parent/Carer Consultation Sessions on the 12<sup>th</sup> and 13<sup>th</sup> November. Parents can stop by for a chat and find out more about the Reflexions service. Matt will also have a Drop-in Session on Thursday 21<sup>st</sup> November between 9 and 11am, please contact the Office to book a 10-15 minute drop-in appointment with Matt.



K Butler

## Boccia

On the last day of term, we went to the David Lloyd Club to take part in the Dudley Schools Boccia tournament. Boccia is a fun game where you roll balls to get closest to a jack (a bit like bowls). We played 6 games, winning 5 which meant we came first! We are now through to represent Ashwood and Dudley in the Black Country Games!

Connor, Oliver, Owen, Matilda and Maisie.



## Attendance

Last week's (21/10–25/10) top attenders:

**KS1: 2W Badgers 93.45%**

**KS2: 4D Chestnut 97.33%**

As a School we have a responsibility to monitor the attendance of all children in School. Attendance is vital to a child, children who have better attendance are proven to achieve more.

[Fines for parents for taking children out of school: What you need to know - The Education Hub \(blog.gov.uk\)](#)

## Dates for the Diary

**Thursday 7th November**

E-safety for Yr 5/6 Parents

**Monday 11th November**

School Photos

**Tuesday 12th November**

Odd Sock Day

**Tuesday 12th November**

Parent/Carer Teacher Consultations

**Wednesday 13th November**

Parent/Carer Teacher Consultations

**Friday 15th November**

Children in Need Mufti Day

**Friday 20th December**

Break up for Christmas holiday 3.15pm

## Menu\*

WC [11.11.24](#) (Week 3)



### Monday

Chicken Korma & Rice  
Vegetarian Sausage and Mash  
Fish Stars  
Peas and Sweetcorn  
Banana Cake

### Tuesday

Battered Fish  
Wedges  
Cheese Potato Pie  
Cauliflower and Carrots  
Ice Cream

### Wednesday

Roast Beef  
Yorkshire Pudding  
Quorn Balls in Gravy  
Fish Cake  
Seasonal Vegetables  
Crumble and Custard

### Thursday

Spaghetti Bolognese  
Vegetable and Lentil Bolognese  
Fish Fingers  
Broccoli and Peas  
Chocolate Brownies

### Friday

Battered Fish  
Chicken Goujons  
Cheese and Tomato Pizza  
Pepperoni Pizza  
Green Beans and Carrots  
Cup Cakes  
Mango Ice Cream

### Available Every Day

Sandwich, cheese, tuna or ham filling.  
Salad, crusty bread, fresh fruit, yoghurt

**All dinners must be booked through School Money the day before they are needed. Please contact the school office if you are having any issues.**

**\* Subject to change**

## Lunches from Home

If you are sending your child with a packed lunch, can we ask that you cut grapes, cherry tomatoes and similar in half please. Also, as a **nut free** school please do not send in Nutella sandwiches or any other nut products. Please do NOT send drinks in cans or glass bottles.

## EYFS News

Reception had a lovely time doing PE and Forest School this week! Please note we will do PE every Thursday and Forest School every Fridays. Children need their PE kits in school and a pair of wellies (and waterproof/puddle suit trousers if possible!)

Next week it is Nursery Rhyme Week in Nursery. Did you know that experts in Literacy and Child Development have discovered that if children know 8 nursery rhymes by the time they are 4 years old they are usually among the best readers by the time they're eight.



## Tree Tots Toddler Group

Wednesdays 9.00 -11.00am KS1 Hall

'The Gift House at the Robinsons' are visiting Tree Tots Toddlers next week - they are a personalised gift business.

Toys, activities, songs, stories and crafts available. Refreshments included – adults please bring a lidded cup!



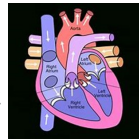
## RBDC News

RBDC staff would like to remind parents of Teacher/Parent Consultations next week. If you are unable to make it and would like a discussion with your child's Teacher for Deaf Children please do email or call the School to arrange.

This week the children have settled back in really well after the half term break. It has been lovely to hear what they have been up to.

Our KS1 Base Group have been practising their basic skills such as reading, handwriting and number work.

Our KS2 Base Group have been learning all about what is inside their body. This week they had fun learning how the heart works in an interactive way!



Well done to Hoor-Ain for being our Star of the Week. We have been very impressed with your positive attitude towards the activities at school. Well done!

## Signed Videos:

Our signed video this week is all about Remembrance Sunday. Please take a look to see why we wear poppies.

<https://m.youtube.com/watch?v=BDRzXVnckGo>



## KS2 News

Welcome back! We hope that you all had a restful and enjoyable half term break. It has been lovely to see all of our children back in school.

All of our Key Stage 2 classes have started their new History topics for this term.



Years 3 and 4 are learning about the pre-historic ages.



And Years 5 and 6 are learning about the Viking period.

This week we have also welcomed to school Heather Jeavons from the Dudley MBC. She has worked with our Year 5 and 6 pupils on Cyber Safety and has also shared some of these ideas with our upper key stage 2 families. Thank you Heather and thank you to all of our families who were able to attend.

### Dates

- 11.11.24 - 6RB trip to Wordsley Library
- 13.11.24 - Year 4 trip to Wordsley Church
- 12.11.24 - 5P trip to Wordsley Library
- 13.11.24 - 5/6B trip to Wordsley Library
- 21.11.24 - Year 5/6 trip to ThinkTank
- 22.11.24 - Year 4/5 workshop Foamhenge (in school)

### PE Lessons:

- \* 5P and 6RB - Monday
- \* 5/6B - Swimming on Monday
- \* Years 3 and 4 - Friday
- \* Years 3 and 4 can come to school in their kit on **Thurs only**
- \* Years 5 and 6 can come to school in their kit on **Wed only**

### REMINDER

When the children come to school in their PE kit they must wear their yellow PE top, green shorts / black joggers and their green Ashwood Park jumper or cardigan. Hoodies and gilets are **not** permitted. Please support us to ensure that all of our children are in the correct uniform and feel part of our Ashwood Park team.

## KS1 News



This week in Key stage One we have started our new History topic 'How am I making History?'. The children have used photographs of themselves to create a timeline of important events in their lives. We really enjoyed looking at the photos of ourselves from the past and sharing special events that were important to us.

We have also begun our new Design Technology topic in which we will make our own windmills! The children are very excited about making sure they work well and fulfil the design criteria.



## Urgent Plea

The Kids Clothes Project has been running for 4 years and has so far helped over 1500 children in families in need across the Black Country, including some from Ashwood Park. They are in **desperate** need of jumpers; T-shirts, trousers, new underwear, shoes, coats, pyjamas, dresses, swimwear, books and soft toys if you have any items spare.

There is a donation bin for The Kids Clothes project in our School Reception so please donate what you can. Many thanks.



## Maths Problem

### Fireworks

Emma had some fireworks. Some made 3 stars. Some made 4 stars.



Altogether Emma's fireworks made 19 stars. How many of them made 3 stars? Find two different answers.

What if Emma's fireworks made 25 stars? Find two different answers.





### Children's Speech and Language Service (Dudley)

Advice for parents and carers can be found at:

<https://www.blackcountryhealthcare.nhs.uk/our-services/childrens-speech-and-language-therapy-service-dudley>

### Dudley's Special Educational Needs and Disabilities Bulletin

The Dudley Special Educational Needs and Disabilities e-bulletin's aim is to keep parent carers, education settings and stakeholders informed about Dudley's Special Educational Needs and Disabilities (SEND) Improvement Programme as well as news and events.

As a system we are working hard to improve our SEND offer across the borough. A lot is happening and we are gathering pace to better support our children, young people and families with SEND.

Our latest bulletin provides:

- updates of our improvement journey including our progress of our Delivering Better Value Programme in SEND
- SEND news from the Dudley Parent Carer Forum, Health, the council and partners
- details of useful events for parent carers and practitioners
- SEND Education Settings News which includes information about free SEND training Resources.

**Sign up now** [SEND Improvement Programme - September 2024 \(govdelivery.com\)](https://www.govdelivery.com) to receive this e-bulletin direct to your email inbox

### Health Choices

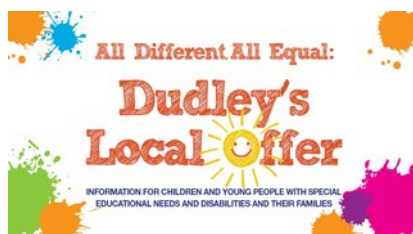
Dudley Public Health and Wellbeing is part of Dudley Council. We support and enable residents, families and communities to make positive lifestyle changes and improve your health and wellbeing. There is lots we can do as individuals to stay healthy and well in Dudley borough. This website is a one-stop place for up-to-date public health information and news, from pregnancy and early life to healthy ageing.

<https://healthydudley.co.uk/>

### Healthy Lunchboxes

The Healthy Lunchbox Resource is available to support children & families to make healthy, yummy and tooth friendly food choices for their children's lunchbox.

<https://healthydudley.co.uk/lunch/>



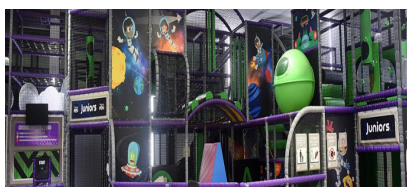
**Dudley's Local Offer** is a new one stop shop website for children and young people with special educational needs and disabilities (SEND) and their parents and carers.

The website contain a wealth of up to date information on areas which include education, training and work, health, leisure and fun, care and moving into adulthood. The website aims to help young people and parents to make individual, informed, positive decisions and choices

The Dudley family hub network is a one-stop shop, offering advice and support for families in Dudley with children aged 0-19 (25 if the child has special educational needs and/or disabilities). It includes an online offer and five local family hubs.



The network includes key Start for Life services. These cover the period from conception to age two. Core Start for Life services such as midwifery, health visiting and early years support are included. <https://www.dudley.gov.uk/residents/early-years-and-childcare/dudley-family-hub-network/>



### SEN Soft Play Sessions

Dudley leisure centres offer soft play sessions for children with SEN:

**At Duncan Edwards Leisure Centre**, there is a SEN soft play session **every Wednesday from 5.00pm - 6.00pm**

**At Halesowen**, there is a SEN soft play session **every Monday from 4.30pm - 6.00pm**.

Both sessions are suitable for children under 11 years of age with disabilities, special educational needs, ASD and their siblings.

**New Sensory Room at Coseley Family Hub** Parents and carers can now book time in a NEW sensory room at the local family hub in Coseley. The FREE space is bookable for between 30min to an hour and gives the chance for children of all ages to explore a range of sensory activities with their parents/carers.

The sessions are self-led but staff will be on hand to support or answer any questions. To book call the hub on 01384 813096.

### **Parent Carer Forum Update:**



Dudley Parent carer Forum welcome registrations for membership from parent/carers and also offer associate memberships to wider family members or practitioners working within Dudley. Joining up means you will be kept up to date on all the latest news, information and events doing on in Dudley. Parents/Carers will also receive a FREE gift when they sign up!

[Sign Up Here](#)

### **Integrated Early Years Service Parent Support Group**



This group offers support to parents and carers of children with a range of additional needs. It provides supportive environment to engage with your child, and also to gain practical advice for everyday routines.

[See More Details Here](#)

### **Dudley Parent Carer Annual Survey SEND Services 2024**

This survey is for parent carers of children/young people with special educational needs or disabilities (SEND) between the ages of 0-25 and living in Dudley.

We want to hear about your recent experiences with a range of different services. To keep this information up to date and relevant we will sometimes ask you to think about your experiences within a certain timeframe (eg previous 12 months).

We understand that if you have more than one child your experiences may vary for each child. Therefore we ask that you **complete a separate survey for each child with SEND that you have**.

We will use the information provided to ensure we focus our work on the areas that are most important to you. We will share the results of this survey with our members and wider networks as well as local services. We will also share the results of this survey with Ofsted or the Department for Education (DfE) during any inspections of SEND services. We will never share any identifying information.

<https://www.surveymonkey.com/r/QFYQL2J>

### **Happier Minds**

Whether you are a young person, a parent/ carer or a professional working with young people we hope this site will be helpful to you and those you care about.

<https://happierminds.org.uk/>

Is your child neurodivergent?  
Do they have SEND?  
Then please come along to our

# Parent Carer Coffee Morning

Aiming for Brighter Futures



19th  
November  
9:00 am



We want to  
hear your  
views and  
experiences

Be part of an  
amazing  
project about  
neurodiversity

This group is being hosted by Dudley Parent Carer Forum as part of the PINS project (Partnerships for Inclusion of Neurodiversity in Schools). We are independent parent carers of SEND children in Dudley. We want to hear your views on all things SEND and Neurodiversity in your child's school. Your individual contributions will be kept confidential but the key themes will help guide the PINS project and Ashwood Park to support neurodiverse children.



For more information contact us at  
[pinsdudleypcf@dudleyparentcarerforum.co.uk](mailto:pinsdudleypcf@dudleyparentcarerforum.co.uk)

# Starting primary school in September 2025

## Why not apply for a place online?

If your child was born between 1 September 2020 and 31 August 2021 they will be due to start primary school in September 2025.

You **MUST** complete an application form either online at [www.dudley.gov.uk/admissions](http://www.dudley.gov.uk/admissions) or by completing an application form from your home local authority by **15 JANUARY 2025**. You can include five school preferences on the application; there is nothing to gain by only putting one preference.

Applications will be available from **1 October 2024**.

### Benefits of applying online

- E-mail decision received by 2pm on day of offer
- It's quick and easy to use
- You can apply 24 hours a day, 7 days a week
- There's no risk that your application will be lost in the post
- You will get email confirmation that your application has been received
- It's safe and secure

The online system will be available 24 hours a day, 7 days a week from 1 October 2024 until the closing date for applications on **15 January 2025**.

**Please note:** Even if your child already attends a school nursery or has an older sibling at school, do not assume that your child will automatically gain a place at that school. This is a common misconception and often the biggest cause of disappointment for parents who believe otherwise.

For further information please contact Dudley School Admissions Service on **0300 555 2345**.



one click ... makes it quick  
[www.dudley.gov.uk/admissions](http://www.dudley.gov.uk/admissions)



# Free School Meals

If you receive any of the following support payments your child may be entitled to Free School Meals

- Income Support
- Income-based Jobseekers Allowance
- Income-related Employment and Support Allowance
- Support under Part VI of the Immigration and Asylum Act 1999
- The guaranteed element of State Pension Credit
- Child Tax Credit (provided you're not also entitled to Working Tax Credit and have an annual gross income of no more than £16,190)
- Working Tax Credit Run-on – paid for 4 weeks after you stop qualifying for Working Tax Credit
- Universal Credit

If you currently receive free school meals but have now moved into the area, you will need to complete a new Free School Meals Application form

If you wish to apply for Free School Meals, please go to

[www.dudley.gov.uk/resident/your-council/council-tax-and-benefits/benefits/free-school-meals](http://www.dudley.gov.uk/resident/your-council/council-tax-and-benefits/benefits/free-school-meals)

If you need further information, you can contact the Free School Meals Team by:



Telephone -01384 814988



Email – [freeschoolmeals.benefits@dudley.gov.uk](mailto:freeschoolmeals.benefits@dudley.gov.uk)



Visiting – Dudley Council Plus, Castle Street, Dudley  
between 8.30am and 5pm Monday to Friday, 9am and 12 noon Saturday



YOGABRIDGES  
PRESENTS

BRITISH WHEEL OF YOGA CERTIFIED

SUITABLE FOR ALL LEVELS OF ABILITY



**EVERY THURSDAY | START AT 7.30PM**

*Ashwood Park Primary School, Bells Lane, Wordsley, Stourbridge, DY8 5DJ*

**£9 / CLASS OR 10% DISCOUNT FOR FULL TERM**

**FOR BOOKINGS AND ENQUIRIES PLEASE CALL OR EMAIL JAN:**

07764 404975 | [janetcooper@blueyonder.co.uk](mailto:janetcooper@blueyonder.co.uk) | [www.facebook.com/yogawithjan](https://www.facebook.com/yogawithjan)