

10th January 2025
Newsletter No. 16
Tel: 01384 818545 info@ashwood.dudley.sch.uk

Article 28 Every child has the right to an education

Messages from Mr Butler

Happy New Year to all our families and friends and a big **Thank You** for all the thoughtful Christmas gifts, they were very much appreciated.

Pantomime - thanks to our fundraising efforts we are treating the children to "A Christmas Carol" next Wednesday performed by M and M Productions.

ROC We will be hearing soon if our joint bid to form the Round Oak Collaborative Academy Trust has been successful. We will keep you up to date when we hear.

Care Quality Commission and Ofsted are carrying out a Dudley Area SEND Inspection - Please see page 6 for details and access to the online survey.

Facebook Do remember to take a look at the School's [Facebook](#) page.

Attendance

Last Term's top attenders:

KS1: 2W 96.45%
KS2: 4D 94.58%

As a School we have a responsibility to monitor the attendance of all children in School. Attendance is vital to a child, children who have better attendance are proven to achieve more.

[Fines for parents for taking children out of school: What you need to know - The Education Hub \(blog.gov.uk\)](#)

Coffee Morning

School are hosting the charity 'We Love Carers' for a coffee morning at 9.15am on Tuesday 28th January.

<https://www.welovecarers.org/>

We Love Carers is a charity run by carers for carers. They exist to give the thousands of unpaid carers the support, information and advice they need to take control of their lives and live it to the maximum, whether you are a carer of disabled children or carers of an adult.

The charity focuses on the carer, filling in gaps and working hard to empower them so they can lead the happiest, most rewarding and fulfilling lives whilst reaching their full potential. This will help you to be an effective carer for the people you love and look after, be involved in decisions and making choices that affect their lives. Many carers are isolated and don't know where to turn for help. **We Love Carers** aims to change that for carers.

If you would like to attend, please let the office know.



Menu*

WC 13.01.25 (Week 2)



Monday

Chicken Goujons
Chicken Nuggets (H)
Vegetable Lasagne (V)
Fish Stars
Potato Crunchies
Sweetcorn and Carrots
Mini Doughnut

Tuesday

Beef & Bean Chilli
Beef Burger (H)
Country Vegetable Bake (V)
Fish Fingers
Brown and White Rice
Cauliflower and Green Beans
Syrup Sponge and Custard

Wednesday Day

Big Breakfast
Big Breakfast (H)
Shepherdess Pie (V)
Fish Cake
Roast Potatoes
Cauliflower and Carrots
Chocolate Shortbread

Thursday

Chicken Tikka Masala
Fish Fingers
Quorn Burger (V)
Brown and White Rice
Diced Potatoes
Peas and Carrots
Marble Sponge & Custard

Friday

Pizza Selection
Cauliflower & Sweet Potato Curry (V)
Battered Fish
McCain Chips
Sweetcorn and Baked Beans
Apple Muffin

Available Every Day

All dinners must be booked through School Money the day before they are needed. Please contact the school office if you are having any issues.

* Subject to change

PTA News

Christmas Raffle



Thank you to all those who bought a PTA Christmas Raffle ticket last term. We raised an amazing **£440** which will go towards our annual pantomime (to be performed in School next week).

Christmas Jumper Appeal



Do you have any preloved Christmas Jumpers that you no longer need? We will be holding a Christmas Jumper Market later in the Year and would welcome donations now.

Disco



Wednesday 12th February...more details to follow

Dates for the Diary

Wednesday 8th January

Tree Tots Toddlers 9-11 am

Wednesday 12th February

School Disco

Friday 14th February

Break up for Half Term 3.15pm

Monday 24th February

Return to School 8.50am

Friday 11th April

Break up for Easter Holidays 3.15pm

Lunches from Home

If you are sending your child with a packed lunch, can we ask that you cut grapes, cherry tomatoes and similar in half please. Also, as a **nut free** school please do not send in Nutella sandwiches or any other nut products. Please do NOT send drinks in cans or glass bottles.



EYFS News

The children have come back to school brilliantly and it's been lovely hearing about their Christmas holidays.

Reception parents, please ensure PE and Forest School kits are returned to School asap and PE will be Thursdays and Forest School on Fridays as normal.



Just a reminder that in Early Years we play outside every day, so please ensure in these cold Winter conditions that children are dressed warmly and have suitable coats and hats and gloves if needed.

As always, please ensure everything is labelled.

Wishing all our families a very Happy New Year!!

Tree Tots Toddler Group

Wednesdays 9.00-11.00am



Toddlers is back every Wednesday term time. Mrs Manville will now share the running of it with Miss Reynolds and we have lots of lovely activities planned. Watch this space!

Toys, activities, songs, stories and crafts available. Refreshments included — adults please bring a lidded cup!

KS1 News

This week we have been happy to welcome the children back into Key Stage One after a lovely break.

They have been excited to start some of their new topics such as 'What is the weather like?' in Geography.



This half term we will also be starting to work on 3D sculptures in Art- making paper towers and life size models.

The children are also working on the topic of money in Maths for the next few weeks so looking at coins and notes at home would really help them to recognise their values.



Urgent Plea

The Kids Clothes Project has been running for 4 years and has so far helped over 1500 children in families in need across the Black Country, including some from Ashwood Park. They are in **desperate** need of jumpers; T-shirts, trousers, new underwear, shoes, coats, pyjamas, dresses, swimwear, books and soft toys if you have any items spare.

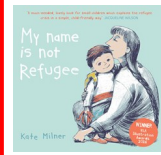
There is a donation bin for The Kids Clothes project in our School Reception so please donate what you can. Many thanks.



RBDC News

Happy New Year! The children have had a fantastic start to the Spring Term.

This term Acorn Class' learning will be based on traditional tales, beginning with The Three Little Pigs.



Conkers Class will be studying the story 'My name is not Refugee'.

We would like to welcome Miss E Thompson (new Conkers TODC) and Mrs Mallinson (new Year and 4 mainstream TODC) to the RBDC. They are both very excited to be part of the RBDC team here at Ashwood!



A huge congratulations to Ammar, our RBDC Star of the Week this week. Ammar has come back to school after the holidays with a positive attitude and ready to continue his learning. Well done Ammar!

Signed Videos:

Our YouTube video this week focuses on New Year Resolutions. Do you have a New Years Resolution?

New Year's Resolutions - A BSL Video

KS2 News

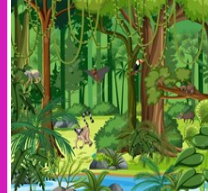
Happy New Year to all of our families. We hope you had a restful break.

Our Key Stage 2 children have all started their new topics this week.

In years 5 and 6, our children will explore the question, would you like to live in the desert. Take a look at this website at home to support your child:



Years 5 and 6: <https://www.bbc.co.uk/bitesize/articles/zsqnfg8>



In years 3 and 4, our children will be learning all about Rainforests. Take a look at this website at home to support your child:

Years 3 and 4: <https://www.bbc.co.uk/bitesize/articles/zwkfrmg>

PE Lessons

- * 5P - Monday—Swimming
- * Years 3 and 4 - Friday
- * Years 3 and 4 can come to school in their kit on **Thurs only**
- * Years 5 and 6 can come to school in their kit on **Wed only**

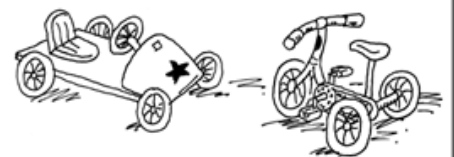
REMINDER

When the children come to school in their PE kit they must wear their yellow PE top, green shorts / black joggers and their green Ashwood Park jumper or cardigan. Hoodies and gilets are **not** permitted. Please support us to ensure that all of our children are in the correct uniform and feel part of our Ashwood Park team.

Maths Problem

At the toy shop

The toy shop stocks tricycles and go-carts.
The tricycles have 3 wheels.
The go-carts have 5 wheels.



Suna counted the wheels.
He counted 37 altogether.

How many tricycles are there?
How many go-carts?

Find two ways to do it.

TT Rockstars

Only two children played TT Rockstars over the holiday so there are no results this week.

<https://play.ttrockstars.com/>



Children's Speech and Language Service (Dudley)

Advice for parents and carers can be found at:

<https://www.blackcountryhealthcare.nhs.uk/our-services/childrens-speech-and-language-therapy-service-dudley>

Dudley's Special Educational Needs and Disabilities Bulletin

The Dudley Special Educational Needs and Disabilities e-bulletin's aim is to keep parent carers, education settings and stakeholders informed about Dudley's Special Educational Needs and Disabilities (SEND) Improvement Programme as well as news and events.

As a system we are working hard to improve our SEND offer across the borough. A lot is happening and we are gathering pace to better support our children, young people and families with SEND.

Our latest bulletin provides:

- updates of our improvement journey including our progress of our Delivering Better Value Programme in SEND
- SEND news from the Dudley Parent Carer Forum, Health, the council and partners
- details of useful events for parent carers and practitioners
- SEND Education Settings News which includes information about free SEND training Resources.

Sign up now [SEND Improvement Programme - September 2024 \(govdelivery.com\)](https://www.govdelivery.com) to receive this e-bulletin direct to your email inbox

Health Choices

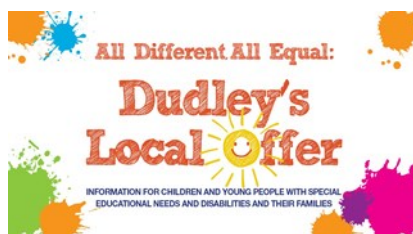
Dudley Public Health and Wellbeing is part of Dudley Council. We support and enable residents, families and communities to make positive lifestyle changes and improve your health and wellbeing. There is lots we can do as individuals to stay healthy and well in Dudley borough. This website is a one-stop place for up-to-date public health information and news, from pregnancy and early life to healthy ageing.

<https://healthydudley.co.uk/>

Healthy Lunchboxes

The Healthy Lunchbox Resource is available to support children & families to make healthy, yummy and tooth friendly food choices for their children's lunchbox.

<https://healthydudley.co.uk/lunch/>



Dudley's Local Offer is a new one stop shop website for children and young people with special educational needs and disabilities (SEND) and their parents and carers.

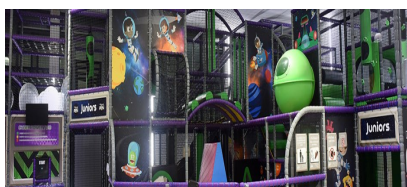
The website contain a wealth of up to date information on areas which include education, training and work, health, leisure and fun, care and moving into adulthood. The website aims to help young people and parents to make individual, informed, positive decisions and choices

The Dudley family hub network is a one-stop shop, offering advice and support for families in Dudley with children aged 0-19 (25 if the child has special educational needs and/or disabilities). It includes an online offer and five local family hubs.



The network includes key Start for Life services. These cover the period from conception to age two. Core Start for Life services such as midwifery, health visiting and early years support are included.

<https://www.dudley.gov.uk/residents/early-years-and-childcare/dudley-family-hub-network/>



SEN Soft Play Sessions

Dudley leisure centres offer soft play sessions for children with SEN:

At Duncan Edwards Leisure Centre, there is a SEN soft play session **every Wednesday from 5.00pm - 6.00pm**

At Halesowen, there is a SEN soft play session **every Monday from 4.30pm - 6.00pm**.

Both sessions are suitable for children under 11 years of age with disabilities, special educational needs, ASD and their siblings.

New Sensory Room at Coseley Family Hub Parents and carers can now book time in a NEW sensory room at the local family hub in Coseley. The FREE space is bookable for between 30min to an hour and gives the chance for children of all ages to explore a range of sensory activities with their parents/carers.

The sessions are self-led but staff will be on hand to support or answer any questions. To book call the hub on 01384 813096.

Parent Carer Forum Update:

Aiming for Brighter Futures



Dudley Parent carer Forum welcome registrations for membership from parent/carers and also offer associate memberships to wider family members or practitioners working within Dudley. Joining up means you will be kept up to date on all the latest news, information and events doing on in Dudley. Parents/Carers will also receive a FREE gift when they sign up!

[Sign Up Here](#)

Integrated Early Years Service Parent Support Group



This group offers support to parents and carers of children with a range of additional needs. It provides supportive environment to engage with your child, and also to gain practical advice for everyday routines.

[See More Details Here](#)

Dudley Parents

There is a one stop shop for parents in the Dudley Borough offering support and information . You can gain free access to guidance and support over a range of topics for parents including First 1001 Days as a Parent, DadPad, Five to Thrive, Solihull Approach, Triple P, Parents in Conflict, The Henry Approach.

www.dudleyparents.co.uk/home

DudleyParents

Urgent Plea

The Kids Clothes Project has been running for 4 years and has so far helped over 1500 children in families in need across the Black Country, including some from Ashwood Park. They are in **desperate** need of jumpers; T-shirts, trousers, new underwear, shoes, coats, pyjamas, dresses, swimwear, books and soft toys if you have any items spare.

There is a donation bin for The Kids Clothes project in our School Reception so please donate what you can. Many thanks.



Happier Minds

Whether you are a young person, a parent/ carer or a professional working with young people we hope this site will be helpful to you and those you care about.

<https://happierminds.org.uk/>

Starting primary school in September 2025

Why not apply for a place online?

If your child was born between 1 September 2020 and 31 August 2021 they will be due to start primary school in September 2025.

You **MUST** complete an application form either online at www.dudley.gov.uk/admissions or by completing an application form from your home local authority by **15 JANUARY 2025**. You can include five school preferences on the application; there is nothing to gain by only putting one preference.

Applications will be available from **1 October 2024**.

Benefits of applying online

- E-mail decision received by 2pm on day of offer
- It's quick and easy to use
- You can apply 24 hours a day, 7 days a week
- There's no risk that your application will be lost in the post
- You will get email confirmation that your application has been received
- It's safe and secure

The online system will be available 24 hours a day, 7 days a week from 1 October 2024 until the closing date for applications on **15 January 2025**.

Please note: Even if your child already attends a school nursery or has an older sibling at school, do not assume that your child will automatically gain a place at that school. This is a common misconception and often the biggest cause of disappointment for parents who believe otherwise.

For further information please contact Dudley School Admissions Service on **0300 555 2345**.



one click ... makes it quick
www.dudley.gov.uk/admissions





BRIERLEY HILL MUSICAL THEATRE
PRESENTS

Jack AND THE Beanstalk

18th - 25th
JAN 2025

THE GIANT PANTOMIME!
THATS FEE-FI-FO-FUN!

Box Office - 01384 573381
www.bhillcivic.co.uk

Care Quality and Ofsted local Area SEND Inspection - online survey

Dear Parent Carer

The Care Quality Commission (CQC) and Ofsted have announced today that they are conducting a local [Area Special Educational Needs and or disabilities \(SEND\) inspection in Dudley](#).

Fieldwork will begin on **16 January 2025**. Inspectors will commence onsite work from **20 January 2025 to 24 January 2025**.

The inspectors want to understand what it's like to be a child or young person with SEND in your local area and whether the education health and care services for children with special educational needs and or disabilities (SEND) are effective.

The inspectors will gather feedback in a variety of ways; through surveys, looking at data, talking to the local authority, education settings and SEND senior leaders and they also carry out focussed sampling of children's cases and visits.

Parent carers, children and young people and practitioners are being asked to complete an **online survey**.

The inspectors want to know about the help and support that children and young people with SEND get. You can let them know by filling in a survey below. What you tell them will be treated in confidence.

The surveys will close at 9am on Tuesday 14 January 2025.

Children and young people

If you are a young person with SEND please fill in this survey.

[Take the children and young people survey](#)

Parents and carers

If you are a parent or carer of a child or young person with SEND please complete this survey. If you have more than one child with SEND you can use the same link to complete a separate survey for each child.

[Take the parent and carer survey](#)

[Take the parent and carer survey \(Easy Read version\)](#)

Inspectors will also want to talk with several parent carers about their children's lived experience and you will be contacted separately if this is the case to ask your permission.

They will also talk with the Dudley Parent Carer Forum.

The surveys will close at 9am on Tuesday 14 January 2025

Gathering evidence



The Judgement

After the inspection the CQC and Ofsted will publish a report that will clearly set out what the inspectors have found and what improvements the local area should make. None of your personal information will be shared within the report.

For general information on the inspection process please visit [Area SEND inspections: information for parents and carers](#), more information is also available on Dudley's SEND local offer at <https://dudleyci.co.uk/The-Area-SEND-inspection-framework>.

CAMHS Parent/Carer Workshops

Come and join our Parent/Carer Workshops, run by Black Country CAMHS services (on Zoom for 1.5hours)! Groups held 12pm - 1.30pm.

We know that suffering from mental health difficulties does not only affect the person struggling, but also the family around them. Parenting a child/young person with mental health difficulties can create additional challenges for parents.

We are running workshops exploring a range of difficulties that children/young people may experience, that can impact their emotional wellbeing.

10.07.24- Trauma and Attachment

11.09.24 - Autistic Spectrum Conditions

23.10.24 – Speech and Language

20.11.24- Depression / Low Mood

18.12.24 – Anxiety / OCD

15.01.25 – Self-harm

12.02.25– Anger / Conduct difficulties

12.03.25 – Anxiety

To register your interest telephone **Andrea Ehgartner** on **01922 607400**



bchft_camhs



@CAMHS_BCHFT



www.blackcountryminds.com

Dudley SENDIAS Service is hosting a series of SEND Workshops

Dudley SENDIAS Service offers information, advice and support on all matters relating to SEN and disabilities including health and social care to parents and carers of children with SEND and Young People with SEND up to 25 years old.

Are you

- A parent/carer of a child with SEND?
- A young person with SEND?
- Concerned about the support that is in place to help your child in school/college?

To book on to a workshop contact us at
dudley.sendiass@dudley.gov.uk

Dudley SENDIAS Service Website
<http://dudleysendiass.org.uk/>

Spring Term 2025 10am – 11.30am on MS Teams

Understanding how to access SEN support within settings

- Thursday 23rd January 2025
- Friday 21st March 2025

Understanding the EHCP request process

- Friday 31st January 2025
- Monday 31st March 2025

How to check a draft plan

- Monday 10th February 2025

Preparing and process for annual review

- Wednesday 5th March 2025

Preparation for key transitions

- Thursday 13th March 2025



How can we help?

- Individual casework
- Preparing, supporting and attending meetings
- Help with writing letters and completing forms
- Help to understand what support can be offered to a child or young person with SEN and/or a disability without an education health care plan in place. This could be in an early years, school or further education setting
- Support to parents and young people during an education health care assessment
- Access to an independent supporter if requested - this is subject to availability
- Advice and support in relation to appeals to the SEN and disability tribunal
- Help if things go wrong and advice on complaints relating to SEN and/or disabilities including those related to health and social care
- Help if your child is excluded
- Providing support to manage mediation
- Explaining the disagreement resolution process
- Access to training and workshops

For more information contact:

Dudley SEND information, advice and support service

An answering machine is in operation, please leave a message and we will return your call.

Tel: 07900 161363

Tel: 01384 817373

E-mail: dudley.sendiass@dudley.gov.uk

Web: www.dudley.gov.uk/dudleysendiass



Dudley special educational needs and disability information, advice and support service (SENDIASS)

(formerly Dudley Parent Partnership Service)

If you're a parent or carer of a child or young person with special educational needs (SEN) or a disability, or a child or young person up to the age of 25 with special educational needs or a disability, we can help you.

We provide legally based advice, information and support on all matters relating to SEN and disabilities including health and social care issues.

- Free
- Impartial
- Confidential

Free School Meals

If you receive any of the following support payments your child may be entitled to Free School Meals

- Income Support
- Income-based Jobseekers Allowance
- Income-related Employment and Support Allowance
- Support under Part VI of the Immigration and Asylum Act 1999
- The guaranteed element of State Pension Credit
- Child Tax Credit (provided you're not also entitled to Working Tax Credit and have an annual gross income of no more than £16,190)
- Working Tax Credit Run-on – paid for 4 weeks after you stop qualifying for Working Tax Credit
- Universal Credit

If you currently receive free school meals but have now moved into the area, you will need to complete a new Free School Meals Application form

If you wish to apply for Free School Meals, please go to

www.dudley.gov.uk/resident/your-council/council-tax-and-benefits/benefits/free-school-meals

If you need further information, you can contact the Free School Meals Team by:



Telephone -01384 814988



Email – freeschoolmeals.benefits@dudley.gov.uk



Visiting – Dudley Council Plus, Castle Street, Dudley
between 8.30am and 5pm Monday to Friday, 9am and 12 noon Saturday



YOGABRIDGES
PRESENTS

BRITISH WHEEL OF YOGA CERTIFIED

SUITABLE FOR ALL LEVELS OF ABILITY



EVERY THURSDAY | START AT 7.30PM

Ashwood Park Primary School, Bells Lane, Wordsley, Stourbridge, DY8 5DJ

£9 / CLASS OR 10% DISCOUNT FOR FULL TERM

FOR BOOKINGS AND ENQUIRIES PLEASE CALL OR EMAIL JAN:

07764 404975 | janetcooper@blueyonder.co.uk | www.facebook.com/yogawithjan