

## Who is Who?

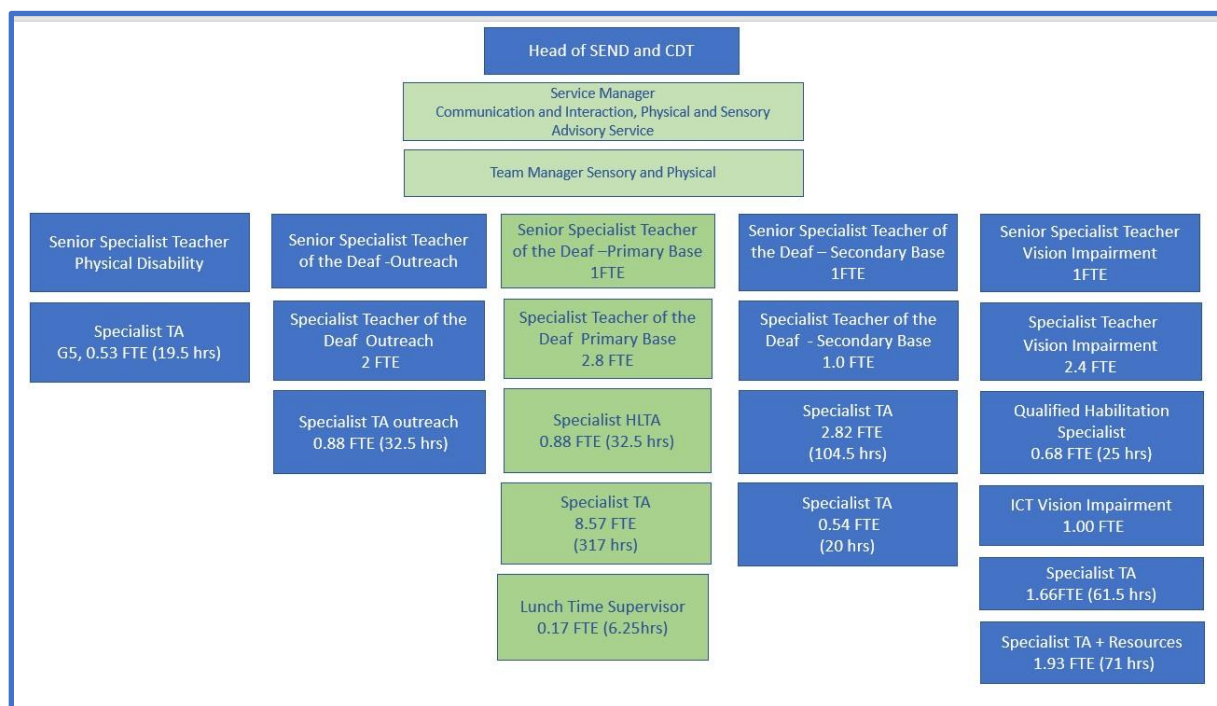
### Ashwood Park Resource Base for the Deaf



The Ashwood Park Resource Base for Deaf Children (RBD) is a non-commissioned specialist educational resource provision that is centrally funded and managed by DMBC, Communication and Interaction, Physical and Sensory Advisory Service (CIPS). It is responsible for:

- (i) identifying the number of places required
- (ii) placement of D/deaf pupils is managed by the EHCP process, all pupils placed within the Resource Base have a primary need of deafness.
- (iii) provision and delivery of the AP RBD
- (iv) employment of AP RBD staff
- (v) staff and resource costs of the AP RBD

This is the staffing structure of the Communication and Interaction, Physical and Sensory Service. The positions responsible for running the RBD are highlighted green:



The Deaf and Hearing Support Service, through the Team Manager of Physical and Sensory as well as the Senior Specialist Qualified Teacher of Deaf Children for the Primary Base, work in collaboration with the Head Teacher, Senior Leadership Team and staff at Ashwood Park Primary School to ensure that all D/deaf pupils are included within the whole school community

and have equal opportunity to access all parts of school life. The collaboration ensures that the holistic needs of the D/deaf pupils are met within a mainstream environment and that the achievements and aspirations of the pupils within the RBD at Ashwood Park are positively promoted.

This is the staffing structure that shows the people responsible for the daily running of the RBD at Ashwood Park:

