

Messages from Mr Butler

Comic Relief Next Friday (21st) is Red Nose Day, please help us to support this worthwhile charity by making a small donation for wearing Mufti.

Science Competition Please encourage your child to enter our Change and Adapt Poster Competition. Deadline 28th March.

Easter Our PTA are organising Easter hampers and competitions, they need your help! See pages 4 and 5 for more information.

INSET Friday 11th April is an INSET day so School will be closed to children.

Social Media Please check you child's phone for appropriate usage on "What's App" and "Discord". We have been alerted to inappropriate use on these apps.

Facebook Do remember to take a look at the School's [Facebook](#) page.

Keith Butler



British Science Week



This week, we have been celebrating **British Science Week** and have been considering this year's theme, 'change and adapt'. Children from Year 1-6, have enjoyed live lessons from Science Farm Live and the children in Key Stage Two have been visited by some very knowledgeable STEM ambassadors. Mrs Bunn did an assembly full of awe and wonder and has set a competition for all children across School; **Create a poster based on the theme of change and adapt.** For example, children could create a poster about how plants and animals adapt to their environment or about how climate change impacts the world.

We look forward to seeing the children's entries. **Deadline- Friday 28th March**

Menu* WC 17.03.25 (Week 1)



Monday

Hunters Chicken
Pasta Neapolitan (V)
Fish Cake
Brown and White Rice
Sweetcorn and Peas
Waffle

Tuesday

Pork Sausages
Chicken Sausages (H)
Vegetarian Sausages (V)
Fish Stars
Potato Wedges
Green Beans and Peas
Chocolate Cookie

Wednesday

Roast Chicken
Roast Chicken (H)
Quorn Balls (V)
Fish Stars
Roast Potatoes
Carrots and Broccoli
American Pancake

Red Nose Thursday

Red Nose Breakfast
(H and V options available)
Fish Fingers
Diced Potato
Cauliflower and Carrots
Marble Sponge and Custard

Friday

Chicken Chow Mein
Pizza (V)
Battered Fish
McCain Chips
Peas and Baked Beans
Blueberry Muffin

**All dinners must be booked through School Money the day before they are needed. Please contact the school office if you are having any issues.
* Subject to change**

Attendance

Last week's top attenders:

KS1: 1/2B Squirrels 98.18%
KS2: 5P Beech 100%

As a School we have a responsibility to monitor the attendance of all children in School. Attendance is vital to a child, children who have better attendance are proven to achieve more.

[Fines for parents for taking children out of school: What you need to know - The Education Hub \(blog.gov.uk\)](#)

Praise Assembly

Children who gained badges and certificates deserve our special congratulations:

12/03/2025

Key Stage One

RR Foxes	Adam
RB Hedgehogs	Jackson
1/2B Squirrels	Jaxon
1/2D Moles	Millie-Mae
2W Badgers	Layla S

Key Stage Two

3/4B Elder	Bourne
3/4R Oak	William
4D Chestnut	Merin
5P Beech	Teddy
5/6B Holly	Bella
6RB Rowan	Miley

Dates for the Diary

Friday 21th March

Comic Relief Donation Mufti Day

Friday 28th March

PTA Easter Donation Mufti Day

Wednesday 2nd April

Last Tree Top Toddlers Session

Thursday 10th April

PTA Easter Events

Break Up for Easter Holidays 3.15pm

Friday 11th April

INSET Day

Monday 28th April

Return to School 8.45am

Friday 2nd May

INSET Day

Friday 23rd May

Break up for Half Term 3.15pm

Monday 2nd June

Return to School 8.45am

Health Week including Sports Days

Thursday 5th June

PTA Sponsored Event

Wednesday 18th June

Y6 Children go to Pioneer

Friday 20th June

Y6 Children return from Pioneer

Wednesday 2nd July

INSET Day

Friday 18th July

Break up for Summer Holidays 3.15pm

Monday 21st July

INSET Day

Lunches from Home

If you are sending your child with a packed lunch, can we ask that you cut grapes, cherry tomatoes and similar in half please. Also, as a **nut free** school please do not send in Nutella sandwiches or any other nut products. Please do NOT send drinks in cans or glass bottles.

EYFS News

Reception children loved learning about life in Gambia, Africa this week. They read a story about a child who lives there called Fatou. They learned about her home and school and the climate and wildlife in Gambia, Africa.



Nursery have been enjoying the story "The Train Ride".

And they have been doing science investigations, looking to see if things are reflective or not.



Tree Tots Toddler Group

Wednesdays 9.00 -11.00am

Mrs Manville and Miss Reynolds have lots of lovely activities planned. Toys, activities, songs, stories and crafts available. Refreshments included – adults please bring a lidded cup!



Our last Tree Tots Toddler session this term will be Wednesday 2nd April. This will be our Easter session and the Easter Bunny will hopefully be making an appearance!

RBDC News

We have had a brilliant week in the RBDC!

In Acorn class this week, we have tried really hard to understand the story of Goldilocks and the three bears. It is becoming one of our favourite stories.



In Conkers this week, we have been focusing on position and direction. We can now recognise left, right, forward and backwards.



We have also been looking at full turns, half turns and quarter turns.

Our Star of the Week this week is Kobie! For trying really hard in reading. He has made a big effort to improve his reading whilst signing alongside. Well Done!

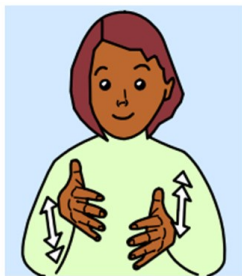


Our BSL Club's focus this week is 'BSL Week'.

Please see the video below to learn all about the history of BSL.

Signed Video:

<https://youtu.be/51-7vivAYg0>



KS2 News

In years 5 and 6 this week, we have started working on a new story called 'Tuesday', which is a picture book about an usual day for a group of frogs.



You can watch it at home here:

<https://www.google.co.uk/search?q=tuesday+story+video#fpstate=ive&vld=cid:43180249,vid:IV5LOHdrrP8,st:0>

In years 3 and 4, our children have been writing their own questions to research about owning a dog.



They have used information from the RSPCA website -

<https://www.rspca.org.uk/adviceandwelfare/pets/dogs/puppy>

British Science Week



BRITISH SCIENCE ASSOCIATION

This week has also been British Science Week and the children have enjoyed participating in the Farm Live sessions and have also been visited in School by some exciting STEM ambassadors - a mechanical engineer and researcher in stem cell biology.

PE Lessons

Monday - 3/4H and 3/4R PE kit needed. 4D swimming kit needed.

Wednesday - Year 5 and 6 can come to School in their PE kit

Thursday - Year 3 and 4 can come to School in their PE kit

Friday - 5P / 5/6B / 6RB PE kit needed.

KS1 News

This week in Key Stage One we have decorated our textile puppets in Design technology. The children made sure their final puppets looked liked their designs and worked hard to cut small pieces of fabric to help create them.

We have also been creating some descriptive writing based on The Colour Monster by Anna Llenas.

Next week we will be finding out more about Bessie Coleman and Amelia Earhart in our History topic-



How did we learn to fly?



Maths Problem

Card tricks

Chico's cards are all different. There is a number from 1 to 8 on each card.



Chico has chosen four cards that add up to 20. What are they? There are seven different possibilities. Try to find them all.

What if Chico has three cards that add up to 16?

Bananas!



Last week we celebrated World Book Day with "The Day the Banana went Bad". The children wrote some amazing sequels and descriptions. And painted lovely fruity pictures.

TT Rockstars

This weeks Rockstars are;

1st Thomas 4D

2nd Kobie 3/4R

3rd Iylaa-Rae 3/4R

Well done to everyone



Children's Speech and Language Service (Dudley)

Advice for parents and carers can be found at:

<https://www.blackcountryhealthcare.nhs.uk/our-services/childrens-speech-and-language-therapy-service-dudley>

Dudley's Special Educational Needs and Disabilities Bulletin

The Dudley Special Educational Needs and Disabilities e-bulletin's aim is to keep parent carers, education settings and stakeholders informed about Dudley's Special Educational Needs and Disabilities (SEND) Improvement Programme as well as news and events.

As a system we are working hard to improve our SEND offer across the borough. A lot is happening and we are gathering pace to better support our children, young people and families with SEND.

Our latest bulletin provides:

- updates of our improvement journey including our progress of our Delivering Better Value Programme in SEND
- SEND news from the Dudley Parent Carer Forum, Health, the council and partners
- details of useful events for parent carers and practitioners
- SEND Education Settings News which includes information about free SEND training Resources.

Sign up now [SEND Improvement Programme - September 2024 \(govdelivery.com\)](https://www.govdelivery.com) to receive this e-bulletin direct to your email inbox

Health Choices

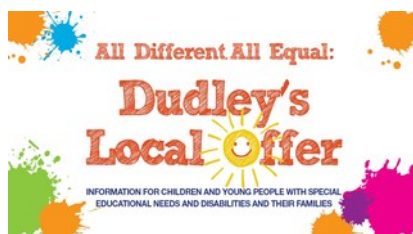
Dudley Public Health and Wellbeing is part of Dudley Council. We support and enable residents, families and communities to make positive lifestyle changes and improve your health and wellbeing. There is lots we can do as individuals to stay healthy and well in Dudley borough. This website is a one-stop place for up-to-date public health information and news, from pregnancy and early life to healthy ageing.

<https://healthydudley.co.uk/>

Healthy Lunchboxes

The Healthy Lunchbox Resource is available to support children & families to make healthy, yummy and tooth friendly food choices for their children's lunchbox.

<https://healthydudley.co.uk/lunch/>



Dudley's Local Offer is a new one stop shop website for children and young people with special educational needs and disabilities (SEND) and their parents and carers.

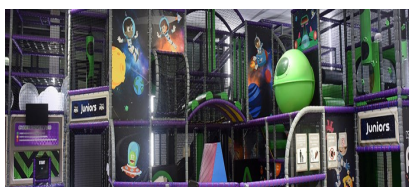
The website contain a wealth of up to date information on areas which include education, training and work, health, leisure and fun, care and moving into adulthood. The website aims to help young people and parents to make individual, informed, positive decisions and choices

The Dudley family hub network is a one-stop shop, offering advice and support for families in Dudley with children aged 0-19 (25 if the child has special educational needs and/or disabilities). It includes an online offer and five local family hubs.



The network includes key Start for Life services. These cover the period from conception to age two. Core Start for Life services such as midwifery, health visiting and early years support are included.

<https://www.dudley.gov.uk/residents/early-years-and-childcare/dudley-family-hub-network/>



SEN Soft Play Sessions

Dudley leisure centres offer soft play sessions for children with SEN:

At Duncan Edwards Leisure Centre, there is a SEN soft play session **every Wednesday from 5.00pm - 6.00pm**

At Halesowen, there is a SEN soft play session **every Monday from 4.30pm - 6.00pm**.

Both sessions are suitable for children under 11 years of age with disabilities, special educational needs, ASD and their siblings.

New Sensory Room at Coseley Family Hub Parents and carers can now book time in a NEW sensory room at the local family hub in Coseley. The FREE space is bookable for between 30min to an hour and gives the chance for children of all ages to explore a range of sensory activities with their parents/carers.

The sessions are self-led but staff will be on hand to support or answer any questions. To book call the hub on 01384 813096.

Parent Carer Forum Update:



Dudley Parent carer Forum welcome registrations for membership from parent/carers and also offer associate memberships to wider family members or practitioners working within Dudley. Joining up means you will be kept up to date on all the latest news, information and events doing on in Dudley. Parents/Carers will also receive a FREE gift when they sign up!

[Sign Up Here](#)

Integrated Early Years Service Parent Support Group



This group offers support to parents and carers of children with a range of additional needs. It provides supportive environment to engage with your child, and also to gain practical advice for everyday routines.

[See More Details Here](#)

Dudley Parents

There is a one stop shop for parents in the Dudley Borough offering support and information . You can gain free access to guidance and support over a range of topics for parents including First 1001 Days as a Parent, DadPad, Five to Thrive, Solihull Approach, Triple P, Parents in Conflict, The Henry Approach.

www.dudleyparents.co.uk/home

DudleyParents

SEN Help

Kids are a charity who create life-changing opportunities by providing a wide range of support to families. They run playscheme days at their centre alongside community days for signed up families. Parent/carers wishing to refer or register with Kids for care planned services can do so by requesting a referral form via the enquiries email: enquiries.orchard@kids.org.uk or via telephone: 01384 897489.

Sassy Sensory surprises are launching 'Wellbeing Walks', they will take place in a different location each month.

Contact toni@sassysensorysurprises.co.uk for further details. Information can be found on their website regarding their recently launched sensory lending library.

Happier Minds

Whether you are a young person, a parent/ carer or a professional working with young people we hope this site will be helpful to you and those you care about.

<https://happierminds.org.uk/>



Mufti Day

Friday 28th March

In exchange for an Easter Egg, Easter Sweets or any other 'Easter' treat.

These will be used as competition prizes (details to follow) & in our Easter Raffle*

*Tickets on sale Wednesday 3rd April

Thankyou for your support.



Easter Events

Thursday 10th April

Nursery/Rec/Ks1

Easter Bonnet Parade

Ks2—Decorate a hard boiled egg
competition.

Prizes for winners.

We will also be drawing the Easter Raffle

Dudley SENDIAS Service is hosting a series of SEND Workshops

Dudley SENDIAS Service offers information, advice and support on all matters relating to SEN and disabilities including health and social care to parents and carers of children with SEND and Young People with SEND up to 25 years old.

Are you

- A parent/carer of a child with SEND?
- A young person with SEND?
- Concerned about the support that is in place to help your child in school/college?

To book on to a workshop contact us at
dudley.sendiass@dudley.gov.uk

Dudley SENDIAS Service Website

<http://dudleysendiass.org.uk/>

Spring Term 2025 10am – 11.30am on MS Teams

Understanding how to access SEN support within settings

- Thursday 23rd January 2025
- Friday 21st March 2025

Understanding the EHCP request process

- Friday 31st January 2025
- Monday 31st March 2025

How to check a draft plan

- Monday 10th February 2025

Preparing and process for annual review

- Wednesday 5th March 2025

Preparation for key transitions

- Thursday 13th March 2025



How can we help?

- Individual casework
- Preparing, supporting and attending meetings
- Help with writing letters and completing forms
- Help to understand what support can be offered to a child or young person with SEN and/or a disability without an education health care plan in place. This could be in an early years, school or further education setting
- Support to parents and young people during an education health care assessment
- Access to an independent supporter if requested - this is subject to availability
- Advice and support in relation to appeals to the SEN and disability tribunal
- Help if things go wrong and advice on complaints relating to SEN and/or disabilities including those related to health and social care
- Help if your child is excluded
- Providing support to manage mediation
- Explaining the disagreement resolution process
- Access to training and workshops

For more information contact:

Dudley SEND information, advice and support service

An answering machine is in operation, please leave a message and we will return your call.

Tel: 07900 161363

Tel: 01384 817373

E-mail: dudley.sendiass@dudley.gov.uk

Web: www.dudley.gov.uk/dudleysendiass



Dudley special educational needs and disability information, advice and support service (SENDIASS)

(formerly Dudley Parent Partnership Service)

If you're a parent or carer of a child or young person with special educational needs (SEN) or a disability, or a child or young person up to the age of 25 with special educational needs or a disability, we can help you.

We provide legally based advice, information and support on all matters relating to SEN and disabilities including health and social care issues.

- Free
- Impartial
- Confidential

Free School Meals

If you receive any of the following support payments your child may be entitled to Free School Meals

- Income Support
- Income-based Jobseekers Allowance
- Income-related Employment and Support Allowance
- Support under Part VI of the Immigration and Asylum Act 1999
- The guaranteed element of State Pension Credit
- Child Tax Credit (provided you're not also entitled to Working Tax Credit and have an annual gross income of no more than £16,190)
- Working Tax Credit Run-on – paid for 4 weeks after you stop qualifying for Working Tax Credit
- Universal Credit

If you currently receive free school meals but have now moved into the area, you will need to complete a new Free School Meals Application form

If you wish to apply for Free School Meals, please go to

www.dudley.gov.uk/resident/your-council/council-tax-and-benefits/benefits/free-school-meals

If you need further information, you can contact the Free School Meals Team by:



Telephone -01384 814988



Email – freeschoolmeals.benefits@dudley.gov.uk



Visiting – Dudley Council Plus, Castle Street, Dudley
between 8.30am and 5pm Monday to Friday, 9am and 12 noon Saturday



YOGABRIDGES
PRESENTS

BRITISH WHEEL OF YOGA CERTIFIED

SUITABLE FOR ALL LEVELS OF ABILITY



EVERY THURSDAY | START AT 7.30PM

Ashwood Park Primary School, Bells Lane, Wordsley, Stourbridge, DY8 5DJ

£9 / CLASS OR 10% DISCOUNT FOR FULL TERM

FOR BOOKINGS AND ENQUIRIES PLEASE CALL OR EMAIL JAN:

07764 404975 | janetcooper@blueyonder.co.uk | www.facebook.com/yogawithjan